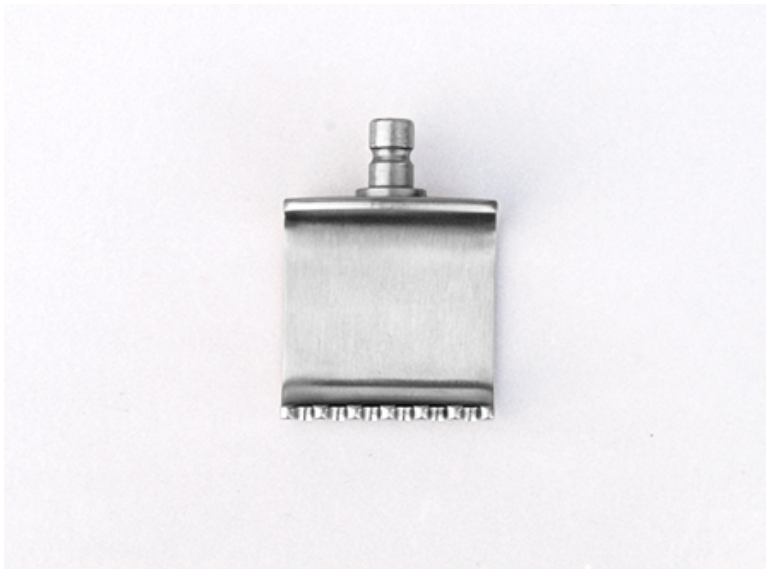


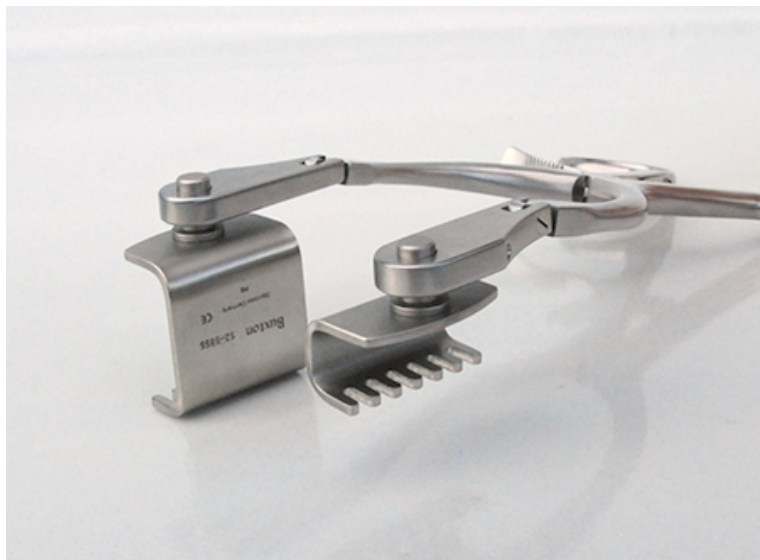


52-5855

Swivel Blade, 30 x 30 mm, with blunt teeth for Distal Radius



- Quick, ball snap connection to frame
- Swivel connection automatically distributes tissue tension
- Broad width enhances access and exposure
- Blunt prongs prevent sharp injuries
- Blade removing forceps (74-3199) available



Distal Radius Fracture Retractor
Blade, 30x30 mm, with blunt teeth