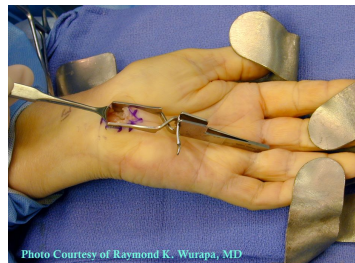
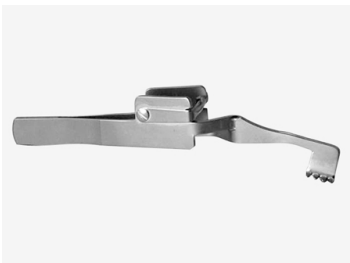




52-5776

Carpal Cricket Retractor, angled, solid blades

- Placement and positioning performed with thumb and forefinger
- Solid blades 10 mm wide by 10 mm deep
- Semi-sharp teeth on leading edges of blades
- Angled shafts leading to blades



Carpal Cricket Retractor, angled, solid blades, sharp prongs

