

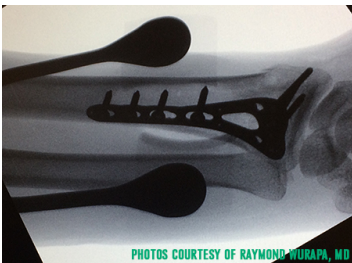


52-5852CF

Carbon Fiber Blade. 30x15mm



- Quick, ball snap connection to frame
- Swivel connection automatically distributes tissue tension
- Broad width enhances access and exposure
- Blunt prongs prevent sharp injuries
- Blade removing forceps (74-3199) available
- 30 mm wide
- 15 mm deep



Radiolucent carbon fiber swivel blade for Distal Radius Fracture Retractor, 30x15 mm, with atraumatic teeth

