

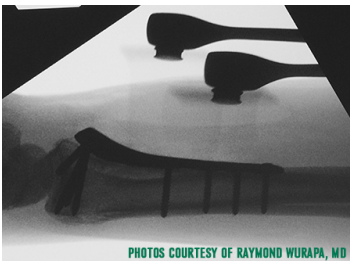


52-5855CF

Carbon Fiber Blade. 30x30mm



- Quick, ball snap connection to frame
- Swivel connection automatically distributes tissue tension
- Broad width enhances access and exposure
- Short, blunted teeth protects tissue being retracted
- Blade removing forceps (74-3199) available
- 30 mm wide
- 30 mm deep



PHOTOS COURTESY OF RAYMOND WURAPA, MD



Radiolucent carbon fiber swivel blade for Distal Radius Fracture Retractor, 30x30 mm, with atraumatic teeth

